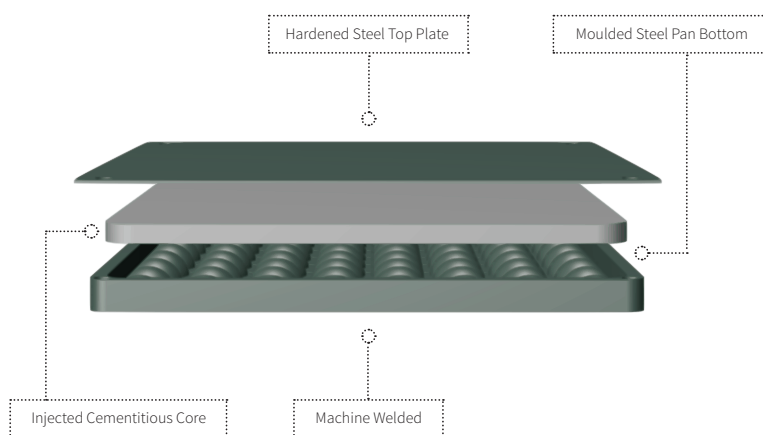
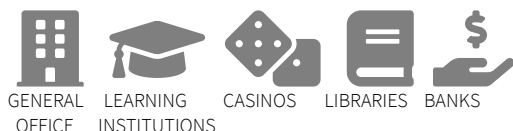


# ICON SERIES ICON X

## RECOMMENDED APPLICATIONS



## SYSTEM NAME

Icon X Medium Grade 3.0kN

## DESCRIPTION

Icon X is considered the classic system for commercial environments. It is widely used for power and data cable management.

## COMPLIANT STANDARDS

Australian Standard AS4154/AS4155  
Australian Standard AS1170  
NATA Testing Certification  
ISO9239-1-2003  
EN12825-2001  
DIN4102-1-1998

**SIZE** 600mm x 600mm

**DEPTH** 33mm

**CORE** Cementitious Compound

## FINISH

ASP's standard powder coated finish.

## CONSTRUCTION

The panels consist of a hardened steel top and bottom sheet plate with corrosion resistant protection, inside and out, encapsulating a structural cementitious core.

## TOLERANCE

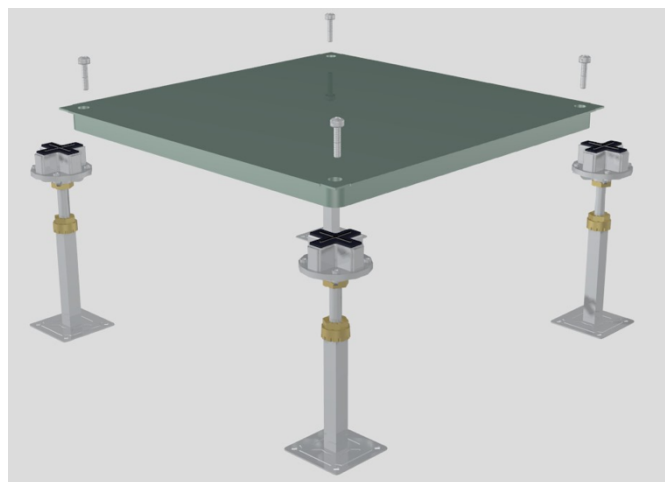
±0.25mm and a flatness tolerance of ±0.5mm measured on a diagonal across the top of the panel

## CONNECTION

The panel is screw fixed to the pedestal head at all four corners

## PERFORMANCE TO STANDARDS GUIDE PER AS4154 – 1993 AUSTRALIAN STANDARD – GENERAL ACCESS FLOORS

Load Level	Panel (kg)	System (kg/m <sup>2</sup> at 150mm FFH)
3.0kN Medium Grade	13.5	40
STATIC PERFORMANCE (kN)		
Concentrated	Impact	Ultimate
3.0	0.4	9.0
DYNAMIC PERFORMANCE (kN) - Passes		
10 passes (wheel size 75x25mm)	10,000 passes (wheel size 150x50mm)	40,000 passes (wheel size 200x75mm)
2.7	2.7	2.25
Safety Factor: Panels must provide a minimum safety factor of three (3) times the concentrated load specified above in accordance with Australian Standards AS4154-1993		



**PEDESTAL SIZE** 100mm x 100mm base plate

## PEDESTAL CONSTRUCTION

Hot dipped galvanised steel pedestal base, head and rod. Aluminium head assembly with locating ABS gasket.

## PEDESTAL LOCKING

The pedestals will be provided with an adjusting and locking nut to maintain the assembly at a selected height, which requires a deliberate action to change the height setting, and which prevents vibration displacement.

## PEDESTAL FINISH

Hot dipped galvanized finish.

## PEDESTAL CONNECTION

The panel is screw fixed to the pedestal head at all four corners.

## PEDESTAL FINISHED FLOOR HEIGHT (FFH)

The finished floor height of the access floor is measured from the sub floor to the top surface of the installed access floor.

*Note: For FFH over 800mm, please see the ASP Icon Rigid Series.*