

Through-Wall Seal

CoolBalance® Brush Seal Solutions for Computer Facilities [R. 07.2013]



CB44

Description

The CB44P Cable Seal for Through-Wall Cutouts consists of an ABS frame and Sealeze high-quality nylon brush with XtraSeal™ brush technology. The XtraSeal brush seal provides the most effective seal to prevent the leakage of pressurized air around power and communications cables in these cutouts. A 6-inch bottom flange protects the wall and cables.

Application

The CB44P-0614 Cable Seal for Through-Wall Cutouts is designed for new installations and is installed before cables are run. Typically used for sealing room-to-room cable cutouts in the portion of the wall below the raised computer room floor, the CB44P provides a seal that prevents conditioned air from escaping into mechanical rooms or up the insides of walls. The CB44P seal provides a 6 x 14.5 in. cable access cutout for passage of large bundles of power and communication cabling. The CB44P prohibits damage to the wall material or cables and allows for additional cabling in the future.

For smaller cutouts, consider CoolBalance CB55 through-wall circular cable seals.

Construction:

High impact ABS-black frame, nylon 6 brush with EPDM layer, polypropylene wall protector

Hole Sizes:

6 x 14.5 in.

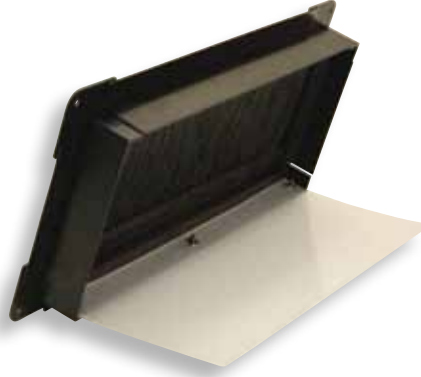
Through-Wall Seal

CoolBalance® Brush Seal Solutions for Computer Facilities

CB44P (for new facilities)

Installation:

CB44P Cable Seal for Through-Wall Cutouts mounts in a 6 x 14.5 in. cutout between two studs on standard 16-inch centers. The unit is installed on the air conditioned side of the wall and can be mounted with screws, double-sided tape or any other bonding agent.



XtraSeal™ Technology

Sealeze XtraSeal is a technology that provides an effective seal between two areas of different dynamic pressures. XtraSeal brush seals use a solid sheet of thin, flexible material (EPDM membrane) sandwiched between layers of filament. The filaments hold the membrane in position to provide an additional, almost impenetrable air barrier.



21 / 930 Great South Road
Penrose, Auckland 1061
New Zealand

t: +64 9 579 4799
f: +64 9 579 4763

www.aspfloors.co.nz

ISO 9001:2008
Made in USA

© 2013 Sealeze A Unit of Jason | CoolBalance® and XtraSeal™ are trade marks of Sealeze A Unit of Jason

