

Steel Encased Timber Core Panel - TC Rigid Grid System

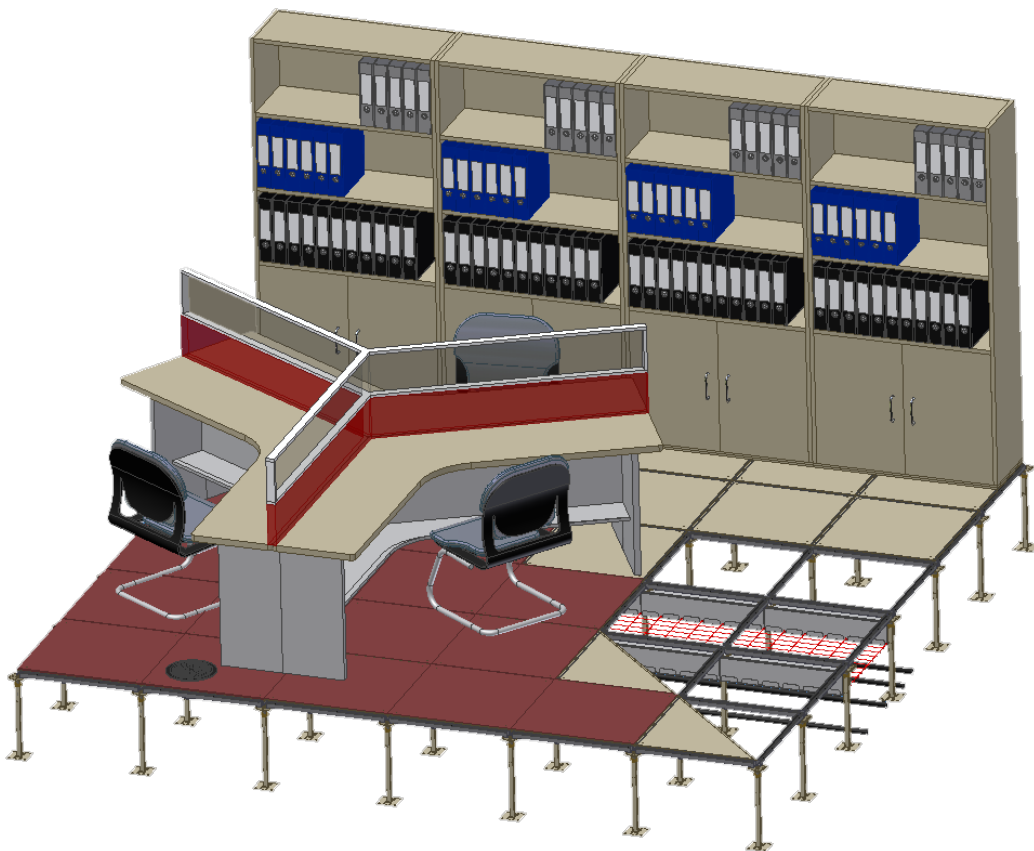
System Overview:

This system, as the name suggests, has a permanently fixed rigid grid understructure made up from the pedestals and stringers. The stringers are screw fixed onto the pedestal heads forming a perfect 600 x 600mm square grid.

System Applications:

The TC bare panel rigid grid system is designed for those small to medium applications where:

1. There will be constant rolling activity on the floor: ie banks where heavy loads are rolled across the floor on routine daily basis.
2. General high load and traffic areas: ie corridors and lobbies where there is constant activity and heavy loads placed on the floor.



Design Features

Steel Encased

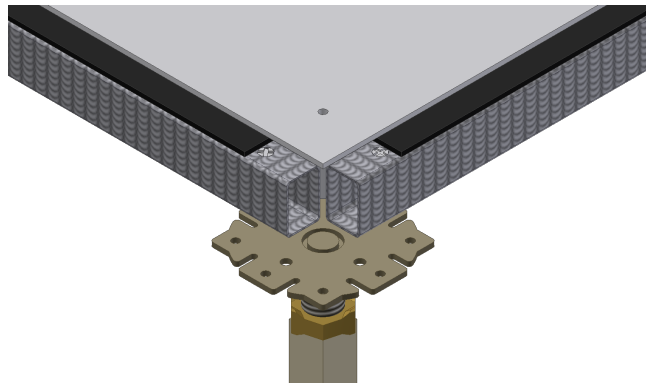
Steel encasing to provide a more robust product with no limitations to application or environmental surroundings.

Gravity Fixed Panels

Panels are gravity fixed to the understructure with stringers providing location and extra strength.

4 Corner Screw Panel

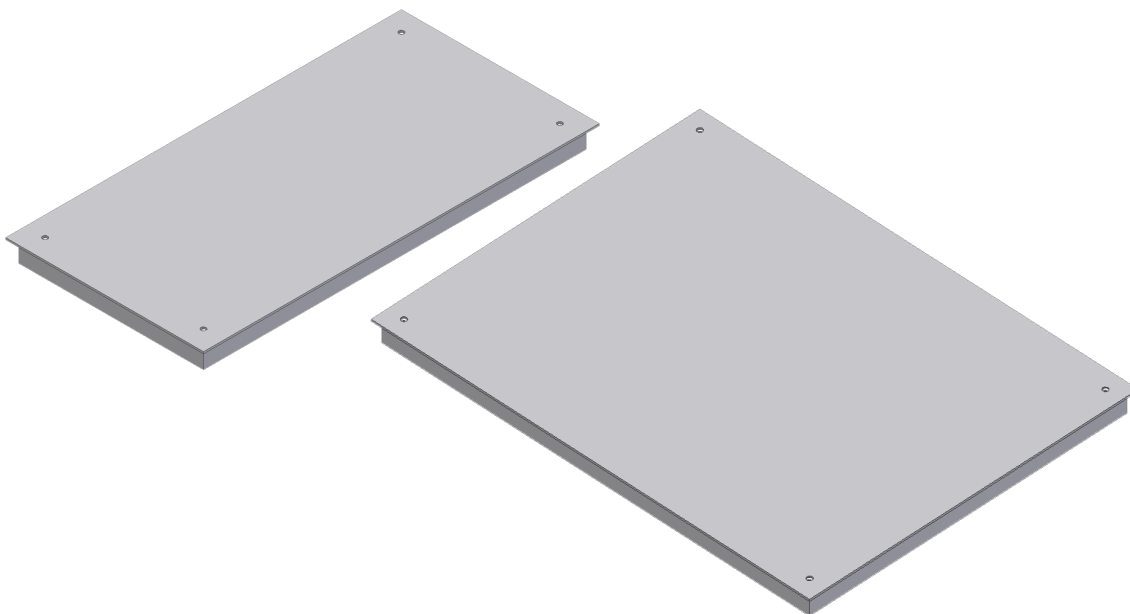
Screw holes in each corner to allow panels to be individually screw fixed providing greater rigidity as well as easier and faster access.



Finishing Panels:

Full bearing 600 x 300mm and 600 x 800mm panels designed to minimise small off cuts experienced with cutting around columns and finishing off to the perimeter.

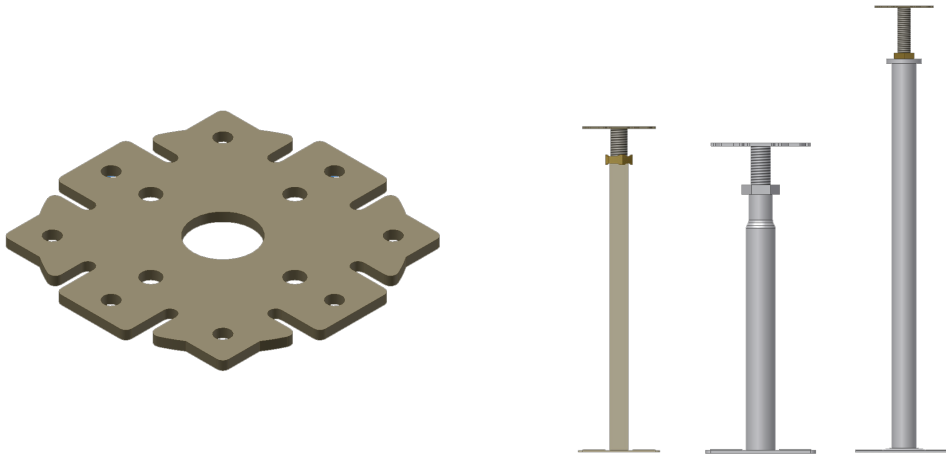
The 600 x 300mm panel may also be used when there is a necessity for a 300 x 600mm air grille.



System Understructure

Pedestal: S8, S8-UK, S11

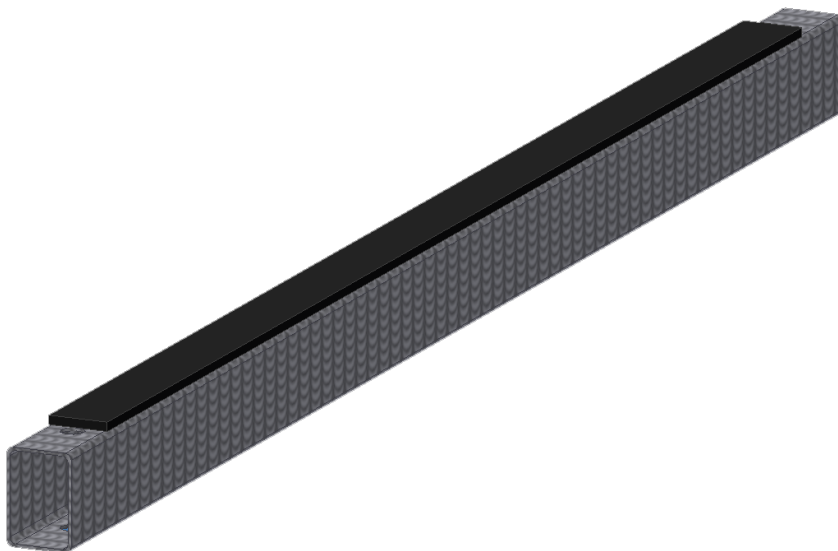
The pedestal head remains the same for the entire system, where only minor changes are made to the pedestal tubes to suit the desired FFH.



Stringer: SC-S600

The stringer design is the same throughout the range. Predrilled holes at the end of each side allow the stringer to be screw fixed onto the pedestal head forming a rigid grid system.

The top of the stringer comprises of 3mm sponge rubber foam providing a buffer between the stringer and the panel.



Load Tolerances - For 600 x 600 standard panels and specialised finishing panels

Medium Grade Panel: TC 3.6kN

| Panel Grade | Concentrated Load | Uniform Load | Ultimate Load | Impact Load |
|---------------|----------------------------|---------------------------------|---------------------------------|-------------|
| Medium Grade | 3.6 kN | 9.4k N/m ² | 14.7 kN | 670 N |
| Rolling Loads | 75 x 25mm 10 passes | 150 x 50mm 10,000 passes | 200 x 75mm 40,000 passes | |
| | 3.6 kN | 2.7 kN | 2.25 kN | |

Heavy Grade Panel: TC 4.5kN

| Panel Grade | Concentrated Load | Uniform Load | Ultimate Load | Impact Load |
|---------------|----------------------------|---------------------------------|----------------------------------|-------------|
| Heavy Grade | 4.5 kN | 12 kN/m ² | 16.9 kN | 670 N |
| Rolling Loads | 75 x 25mm 10 passes | 150 x 50mm 10,000 passes | 200 x 75mm 250,000 passes | |
| | 4.5 kN | 3.6 kN | 2.25 kN | |

Extra Heavy Grade: TC 5.6kN

| Panel Grade | Concentrated Load | Uniform Load | Ultimate Load | Impact Load |
|-------------------|----------------------------|---------------------------------|----------------------------------|-------------|
| Extra Heavy Grade | 5.6 kN | 14.4 kN/m ² | 22.2 kN | 670 N |
| Rolling Loads | 75 x 25mm 10 passes | 150 x 50mm 10,000 passes | 200 x 75mm 500,000 passes | |
| | 5.6 kN | 4.5 kN | 2.25 kN | |

Industrial Grade: TC 6.6kN

| Panel Grade | Concentrated Load | Uniform Load | Ultimate Load | Impact Load |
|------------------|----------------------------|---------------------------------|---------------|----------------------------------|
| Industrial Grade | 6.6 kN | 18 kN/m ² | 26.7 kN | 670 N |
| Rolling Loads | 75 x 25mm 10 passes | 150 x 50mm 10,000 passes | | 200 x 75mm 750,000 passes |
| | 6.6 kN | 5.6 kN | | 2.25 kN |

Heavy Industrial Grade: TC 8.8kN

| Panel Grade | Concentrated Load | Uniform Load | Ultimate Load | Impact Load |
|-------------------|----------------------------|---------------------------------|---------------|------------------------------------|
| Extra Heavy Grade | 8.8 kN | 24 kN/m ² | 31.1 kN | 670 N |
| Rolling Loads | 75 x 25mm 10 passes | 150 x 50mm 10,000 passes | | 200 x 75mm 1,000,000 passes |
| | 8.8 kN | 8.0 kN | | 2.25 kN |

Testing Data:

- The above results have been obtained from independent testing and have been tested in accordance to AS4154-1993 (General Access Floor (Elevated Floors)) and CISCAs strict guidelines and regulations.
- As stated in the standards, the above mentioned panel deflection must not exceed 2.4mm based on a 24hr testing. In addition to this the above working loads for each panel carries a safety factor of 3 x the working load.

All ASP products are thoroughly tested and certified by qualified engineers. If you require further information please contact the technical team at ASP on (02) 9620 9915 or visit our contact page on www.aspfloors.com.au